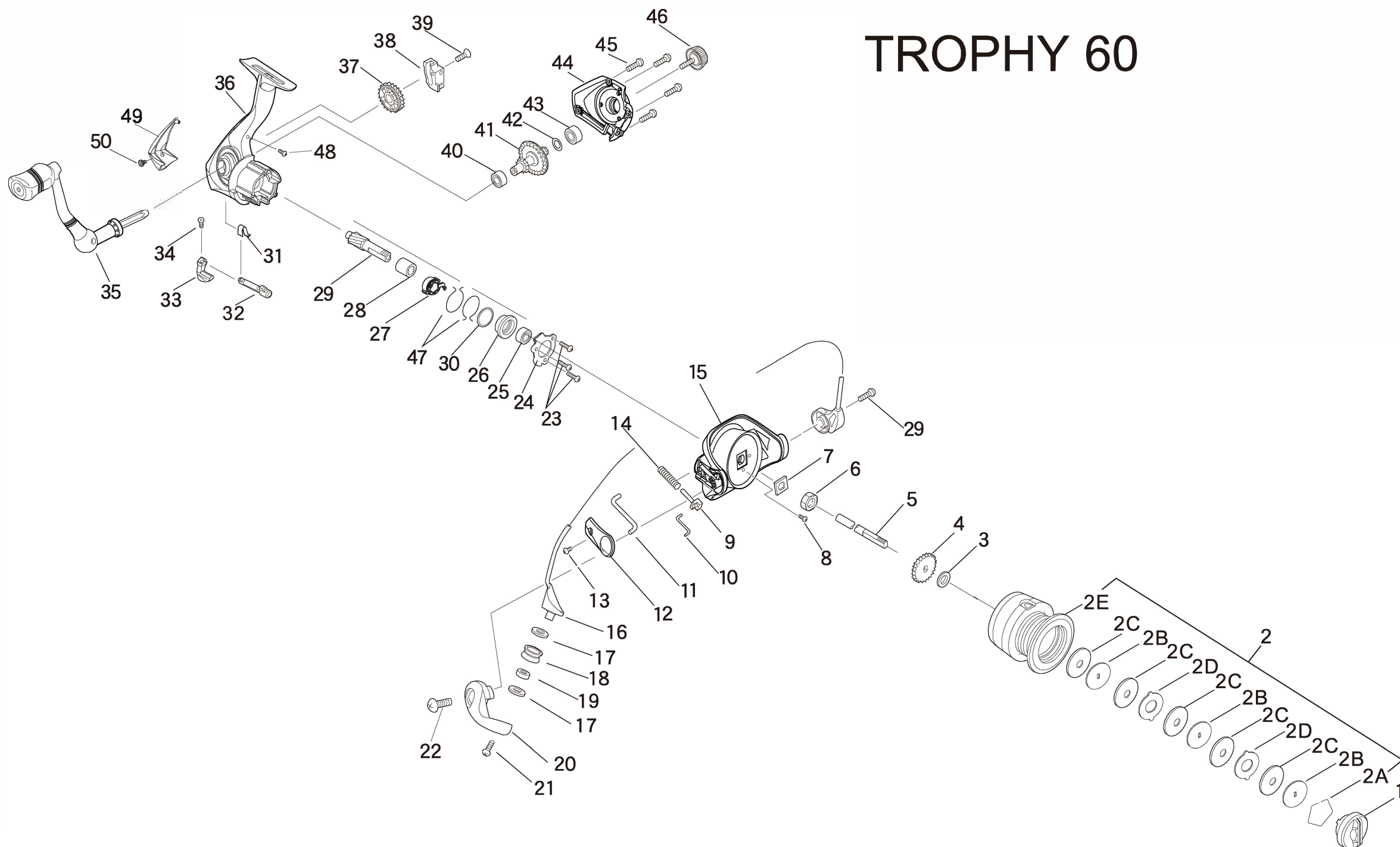


■ EXPLODED VIEW

TROPHY 60



FINNOR TROPHY60

Key No.	Description	Part No.	Q'TY	Key No.	Description	Part No.	Q'TY
		FNTY60				FNTY60	
1	DRAG KNOB ASSEMBLY	LAF332-04	1	24	BEARING SUPPORT	PAF118-01	1
2	SPOOL KIT INCLUDE	PAF421-01	1	25	BALL BEARING	UK028-01	1
	2A - RETAINING RING	LAF038-01	1	26	BALL BEARING HOLDER	PAF135-01	1
	2B - DRAG WASHER "D"	LAF081-01	3	27	ANTI-REVERSE BEARING	PAF063-01	1
	2C - DRAG WASHER "B"	LAF030-01	5	28	INNER RING	PAF139-01	1
	2D - DRAG WASHER "A"	LAF080-01	2	29	PINION GEAR	PAF011-01	1
	2E - SPOOL ASSEMBLY	PAF321-01	1	30	ANTI-REVERSE BEARING WASHER	PAF109-01	1
3	CLICK WASHER	LAF167-01	1	31	ANTI-REVERSE SPRING	LAF089-01	1
4	CLICK	LAF225-01	1	32	ANTI-REVERSE CAM	PAF090-01	1
5	MAIN SHAFT	PAF015-01	1	33	ANTI-REVERSE LEVER	LAF059-01	1
6	NUT	PAF006-01	1	34	ANTI-REVERSE LEVER SCERW	LAF232-01	1
7	NUT WASHER	PAF065-01	1	35	HANDLE ASSEMBLY	PAF318-01	1
8	NUT SCREW	PAF113-01	1	36	BODY ASSEMBLY	PAF301-01	1
9	SLIDER	LAF020-01	1	37	O/S GEAR	PAF053-01	1
10	LINK	PAF035-01	1	38	OSCILLATOR	PAF025-01	1
11	KICK LEVER	PAF019-01	1	39	SCREW-OSCILLATOR	PAF111-01	1
12	COVER A	PAF087-01	1	40	BALL BEARING-BODY	CH028-01	1
13	COVER SCREW	PAF120-01	1	41	DRIVE GEAR	PAF012-01	1
14	DEAD POINT SPRING	PAF044-01	1	42	WASHER-DRIVE GEAR	LAF290-01	1
15	ROTOR	PAF009-01	1	43	BALL BEARING-BODY COVER	ZG028-01	1
16	BAIL ASSEMBLY	PAF347-01	1	44	BODY COVER ASSEMBLY	PAF323-01	1
17	LINE ROLLER WASHER	LAF203-01	2	45	SCREW-BODY COVER	PAF057-01	4
18	LINE ROLLER	PAF004-01	1	46	HANDLE CAP	LAF073-01	1
19	BALL BEARING	EH158-01	1	47	CLUTCH SPRING	PAF107-01	2
20	BAIL ARM LEVER	PAF007-01	1	48	SCREW-BACK COVER	MAF168-01	1
21	LINE ROLLER SCREW	LAF108-01	1	49	BODY BACK COVER	PAF250-01	1
22	BAIL ARM LEVER SCREW	LAF051-01	2	50	SCREW-BACK COVER	LAF168-01	1
23	BEARING SUPPORT SCREW	PAF120-01	3				